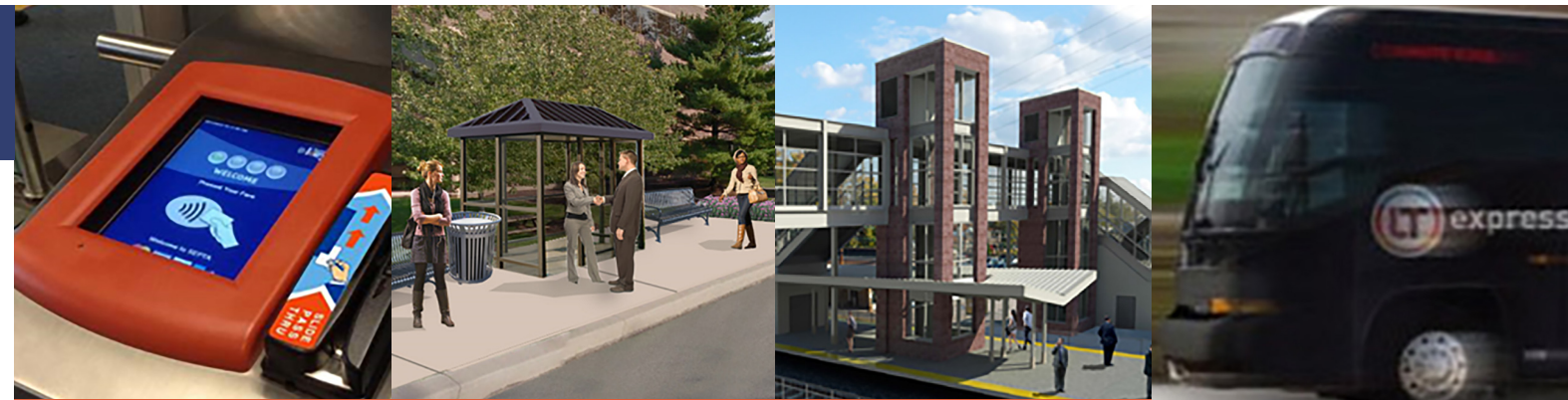


Taking Action...



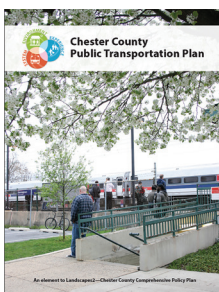
CHESTER COUNTY PUBLIC TRANSPORTATION PLAN

EXECUTIVE SUMMARY

- SYSTEM**
- Bus/rail connectivity**
 - Coordinate new commuter services with services at rail stations and transportation centers for better connectivity.
 - First mile/last mile connections**
 - Promote the use of carpooling, vanpooling, and private shuttle services.
 - Provide car shares/bike shares at or near rail stations.
 - Service reliability**
 - Plan for shorter routes with less stops to achieve better on-time performance.
 - Implement traffic signal prioritization in major transit corridors where feasible.
 - Provide real-time status/traveler information.

- EXPERIENCE**
- User amenities**
 - Provide real time status information at all rail stations and transportation centers.
 - Institute an electronic payment system for all service providers in the county.
 - Develop a public outreach program to increase public awareness, provide user training, and promote the use of the transit system.
 - Create a citizens advisory panel to monitor and report on transit experience related issues.

- ENVIRONMENT**
- Parking availability at rail stations**
 - Expand surface parking at all stations where feasible.
 - Maximize shared use opportunities adjacent to rail stations.
 - Develop structure parking where feasible.
 - Active transportation (bike/ped) connections**
 - Focus on providing pedestrian connections and shelters at heavily used bus stops.
 - Provide ample secure bicycle parking at rail stations/transportation centers.
 - Municipal land use**
 - Work with local municipalities to ensure future development is transit oriented.
 - Bus shelters**
 - Develop a maintenance agreement model(s) for maintaining bus shelter facilities.
 - Park & ride facilities**
 - Develop a maintenance agreement model(s) for maintaining park & ride facilities.



For further information, please download the full plan at www.chesco.org/planning/transitplan.

Redefining transit

The Chester County Public Transportation Plan is a bold and ambitious plan for public transportation that will redefine the commuter preferences, facilities, and experiences for Chester County residents and workers over the next 25 years.

The Public Transportation Plan was adopted by the Chester County Commissioners in July 2014 as an element of Landscapes2, Chester County's comprehensive plan.



“A first class county demands a first class transit system.”



Source: Vista 2025 (Chester County's Economic Development Strategy)

VISION

Improving the SYSTEM



Rail station and parking upgrades:
Coatesville, Parkesburg, Downingtown, Exton, Paoli



Train service restored to
Phoenixville and West Chester by 2040



Express bus routes serving
emerging employment markets



Improving the ENVIRONMENT



Park n' Ride lots conveniently
located along expressways



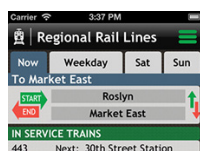
Significant increase in
bus shelters



Improving the EXPERIENCE



Cashless payment system



Real-time/traveler information



Cross-agency fare acceptance



The Plan's vision is to:

"Provide an affordable, reliable, and accessible public transportation network and

- ✓ offer mobility
- ✓ encourage favorable land use patterns
- ✓ sustain the environment, and
- ✓ alleviate congestion within the designated growth areas."

Shelters

As of 2014, only 11% of bus stops with more than five daily boardings had a bus stop and connecting sidewalk. By 2030, the Plan recommends 75% of these bus stops have both shelters and connecting sidewalks.

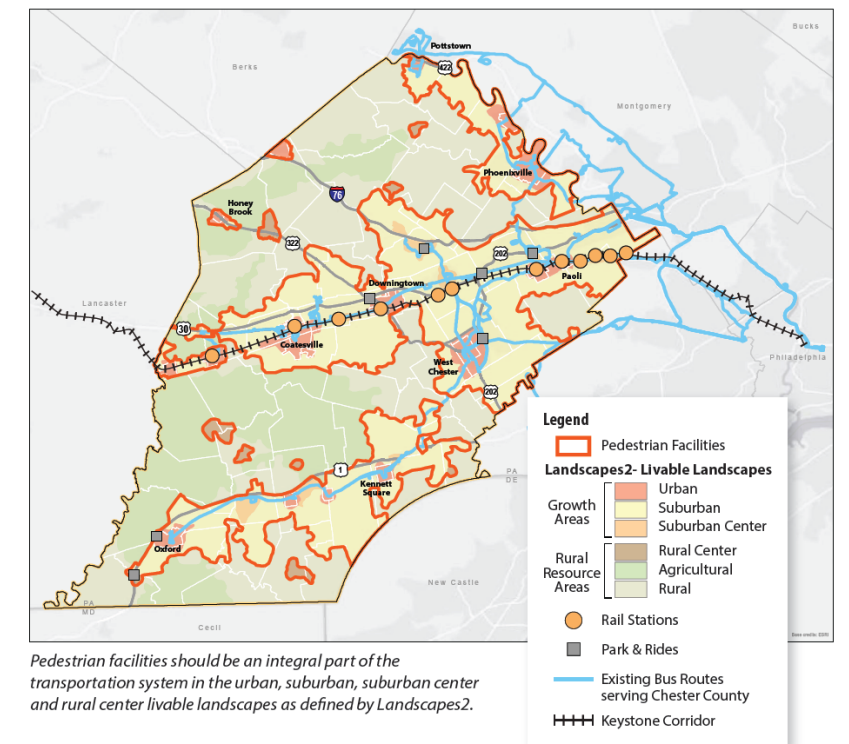


Specific recommendations for bus stops can be easily accessed via an interactive map on the Public Transportation Plan website: www.chesco.org/planning/transitplan.



Sidewalks

Pedestrian facilities should be an integral part of the transportation system in the urban, suburban, suburban center and rural center livable landscapes as defined by Landscapes2.



Pedestrian facilities should be an integral part of the transportation system in the urban, suburban, suburban center and rural center livable landscapes as defined by Landscapes2.